



IXP120 Alarm Monitor Utility

SOFTWARE MANUAL

Scope of Document

This document provides a brief overview of the Alarm Monitor Utility and its interaction with the IXP120 Software.

Document Conventions

We use the following conventions in this document:



Note – points out extra information



Tip – points out alternative methods to perform a task



Important – points out important information



Warning – points out potential danger to you or the product

Before You Begin

Have the IXP120 Software CD available.

Where to Find Information

Additional information is available in the following resource:

- **Alarm Monitor Utility Help**—part of the **Utility Software**. Help provides detailed information on all aspects of the Utility.

About Monitored Alarms



To operate the Monitored Alarm Utility, you require either a network connection or a modem, or both.



The Replicate Site Wizard, in the IXP120 Software, copies Monitored Alarm settings with the rest of a Site's settings.

The IXP120 Alarm Monitor Utility is a simple utility that receives information about Alarms triggered on configured sites.

For full use of the Alarm Monitor Utility you must install and configure the Utility on a separate PC. When you have configured the IXP120 Software, assigned alarm events cause the IXP120 Site Controller to connect to the PC running the Alarm Monitor Utility. On connection, the Utility receives alarm information from the Site.

Example: The IXP120 Software configures the Site Controller to dial out or make an internet connection when somebody forces a door (for example criminals gaining entry to the Site). The IXP120 Controller at the site, connects to the security companies PC with the Alarm Monitor Utility installed and configured, thus alerting the security company.

Installation

PC Requirements

Make sure your PC meets the following minimum requirements:

| Component | Minimum Requirement |
|-------------------|--|
| Processor | Pentium II, 600 MHz |
| RAM | 256 Mb |
| Hard Disk | 2 Gb available space |
| Graphics | 1 024 x 768 |
| Modem | 56 K, USB or Serial |
| Ports | USB, RS232, or Ethernet |
| Removable Storage | CD-ROM Drive |
| Operating System | Microsoft Windows NT, 2000, or XP Professional |

Table 1: Minimum PC Requirements

Software Installation



The IXP120 System cannot dial out to the Alarm Monitor if they are installed on the same PC. The Alarm Monitor Utility must be installed on a separate PC.



The PC hosting the Alarm Monitor Utility requires a Modem and/or must be ethernet enabled. This depends on the Controllers required to connect to the PC hosting the Utility.



You must install the Alarm Monitor Utility individually on every PC used to monitor alarms.

Firebird Server

Install the Firebird Server as follows:

1. Insert the IXP120 CD into your PC's CD-ROM drive.
2. Wait for the CD to auto-run.
3. Select the **Browse CD** option.
4. From the Firebird folder, select **Setup Firebird Project**.
5. At the **Select Startup Language** dialog, from the drop-down list select a language.
6. Click the **OK** button.

Installation Wizard

1. At the Welcome screen, click the **Next** button.
2. At the Licence Agreement screen, select the **I Accept the Agreement** radio button.
3. Click the **Next** button.
4. Review the Information screen and then click the **Next** button.
5. At the Select Destination Location screen, click the **Next** button.
6. From the Select Components Screen, select the components for installation.
7. Click the **Next** button.
8. At the Select Start Menu Folder screen, click the **Next** button.

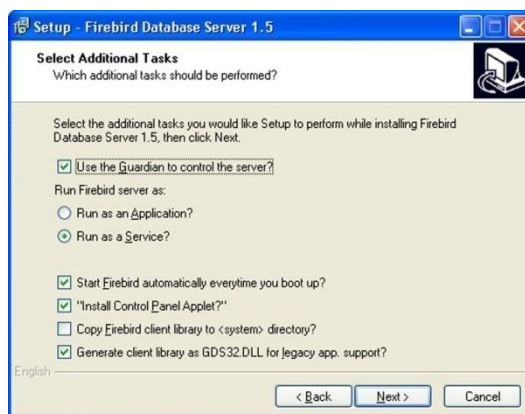


Figure 1: Select Additional Tasks Screen

-
9. At the **Select Additional Tasks** screen, select that the following tasks run:
 - Use the Guardian to Control the Server
 - Run as a Service
 - Start Firebird Automatically Every time you Boot up
 - Install Control Panel Applet
 - Generate client Library as GDS32.DLL for Legacy Application Support
 10. Click the **Next** button.
 11. At the Ready to Install screen, click the **Install** button.
 12. Review the Information screen, then click the **Next** button.
 13. At the final screen, select the **Start Firebird Service Now** checkbox.
 14. Click on the **Finish** button.

Alarm Monitor Utility

Install the Alarm Monitor Utility as follows:

1. Insert the IXP120 CD into your PC's CD-ROM drive.
2. Wait for the CD to auto-run.
3. Select the **Install Alarm Monitor** option.
4. Follow the on-screen instructions.
5. Click on the **Exit** button.

Initialize the Software

In following this procedure, we assume that preconfiguration of the events in the IXP120 Software has taken place.

If using a Modem enabled site, connect the Modem now.

Start the Software


1. In Windows®, go to **Start>Programs>IXP120Alarms>IXP120 Alarm Monitor**.
2. Enter your **Username** and **Password**.



The default Username is SYSDBA and the default Password masterkey.



Note the location of the Database as shown at the bottom of the Logon dialog.

3. Click on the  button.



When you start the Alarm Monitor Utility, ensure that the message Modem Monitor Thread Started displays in the status bar. This means that a Port is open, and that the Modem is initialised and waiting for a call. If the Monitor Thread has NOT started, select the correct Modem COM Port. Click here for more information.



A Socket Server monitors the Ethernet Controllers. In this case, the Status Bar displays the message "Socket Server Started". If the Socket Server cannot start, a warning message pops up. This pop-up asks that you stop the Utility, or consult the log file.

Manually Edit the IXP121alarm.properties File

If your Database's location does not match the installation folder, continue as follows:


1. Exit the IXP120 Alarm Monitor Software.
2. Edit the **IXP121alarm.properties** file manually (This file is located in the your installation folder). Replace the IXP120Alarms folder name, with your folders name.
 - Set the key IXP1.database.Firebird.URL.IXP120Dialup= path to the database in your installation folder For example:
C:\MyIXP120Alarms\database\IXP120Dialup.fdb
 - Similarly set the key for Reports, for example:
IXP1.database.Interbase.JettyURL=jdbc:firebirdsql://localhost/C:\MyIXP120Alarms\database\IXP120Dialup.fdb
3. Restart the IXP120 Alarm Monitor application.

Select the COM Port for Modem Sites



Figure 2: Select COM Port Dialog

This is the Port that the application checks to find a Modem. Continue as follows to select or change the COM Port reference.

-
1. In the IXP120 Alarm Monitor Utility Software, from the menu bar select **File>Select COM Port**.
 2. From the **Select Modem COM Port** drop-down list, select the COM Port to which the Modem's connected.
 3. Click on the  button.
 4. Exit and restart the IXP120 Alarm Monitor Software.

Listener Port for Ethernet Sites

The Listener Port monitors incoming Ethernet connections from remote sites with Ethernet Controllers trying to report alarms. The default Port Number is **11 000**. The default Port Number applies unless you change it.

Understand the Interface

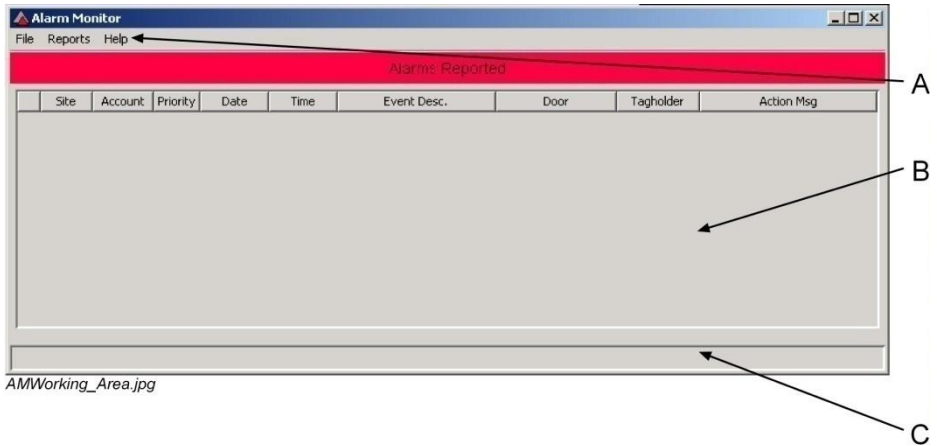


Figure 3: Work Area


- A – Menu Bar**, includes the File, Reports and Help drop-down menus.
- B – Alarms Reported Pane**, displays details of the alarms reported.
- C – Active connection to Controller**, displays software status messages for the user

Using Help

The Alarm Monitor Utility has an integrated Help system. Activate Help by clicking on the Help drop-down menu.

Using Alarm Monitor Utility

Setup the Alarm Monitoring Password

1. On the Alarm Monitor Utility menu, select **File>Remote Site Monitor Password**.
2. Enter and confirm a password.
3. Click on the  button.



The Alarm Monitoring Password is required to access remote Sites which attempt a connection to this Utility. All Sites that use Alarm Monitoring must have the same password which must be the same as the password in the Alarm Monitor Utility.



*The default Password is **impro**.*


Listener Port

Ethernet Connections need a Port Number. Remote Ethernet Controllers wishing to report alarms should all use the same Port when connecting to the Alarm Monitor application. The default Port Number is **11000**. If you wish to change this Port Number, change it for all monitored Ethernet sites AND change it in the Alarm Monitor Utility.



Figure 4: Port Number for Remote Controller TCP Connection Dialog

Setting the Listener Port for incoming Ethernet connections:


1. On the Alarm Monitor Utility menu, select **File>Listener Port** (Ethernet Sites Only).
2. In the **Enter Port Number for Remote Controller TCP/IP Connection** textbox, enter the Port Number.
3. Click on the  button.

Displayed Alarms

When you start the Utility, all alarms in the Database less than 1 week old display in the table to initialise it.

When someone triggers an Alarm on the Remote Site, the remote Controller contacts the Alarm Monitor Utility application. The Alarm Monitor displays received alarms in a tabular format in the Alarms Reported Pane. Higher priority Alarms display above lower priority Alarms.

Acknowledge Alarms

1. Double-click an Alarm to Acknowledge it. The Alarm Received dialog displays.
2. Enter a response in the textbox (this response is logged in the Database).
3. Click on the  button.



A tick is displayed in the first cell of an alarm row to show it has been acknowledged. Please note that NO action takes place at the Controller.

Select Colour Scheme

On the menu, select **File>Select Colour** to change the colour scheme. The dialog gives you the option of a "Marine" or "Traditional" colour scheme.

Logging Out

To prevent unauthorized persons from closing the Alarm Monitor, you must log out by entering your **Username** and **Password**.

USER NOTES

| | | | |
|---|----------|----------|---|
| This manual applies to V1.2 and upwards of the IXP120 Alarm Monitor Utility Software. (The last two digits of the Impro stock code indicate the issue status of the product). | | | |
| IXP324-0-0-GB-01 | Issue 02 | Oct 2007 | IXP120\Alarm Monitor Utility\English Manuals \Latest Issue\IXP120AM-swm-en-02 Draft 02.docx |